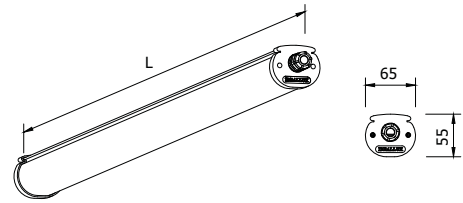


ZITA 3P/P

OPALE/OPAL



Corpo unico in policarbonato coestruso autoestingente opale, resistente ai raggi UV (sistema anti UV JEDEX).
Testata in policarbonato stampato con guarnizione di tenuta completa di presa e spina 3 poli a innesto rapido per il collegamento elettrico.

Ottica diffusiva in alluminio estruso anodizzato con funzione di dissipatore.

Installazione a plafone con staffe di fissaggio a innesto rapido, a sospensione con ganci inox da applicare alle staffe.

Cablaggio passante 3x1,5 mm² versione prolungabile

Sorgente luminosa LED.

Emissione diretta.

Non idonea per applicazioni esterne.

Alimentazione elettronica CAE.

One piece body made of coextruded satin polycarbonate UV-resistant (anti UV system named JEDEX).

Plastic endcaps with sealed gasket with 3 poles connection plug and socket for a quick electrical connection.

Aluminium wide beam louver with heatsink function.

Spring mounting system with quick plug-in fixing brackets, suspension routing through hooks to be fixed on the brackets.

Extendable version with passing power line 3x1,5mm.

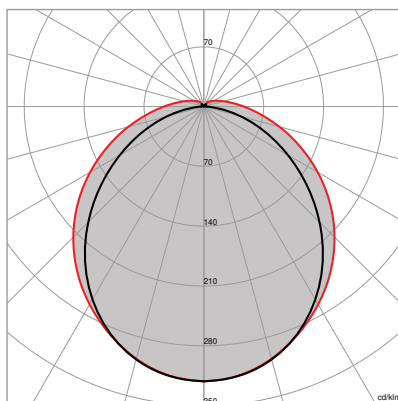
LED light source.

Direct light emission.

Not suitable for outdoor application.

Built in electronic driver CAE.

FOTOMETRIE | PHOTOMETRIES



ZITA
OPALE/OPAL



5Y WARRANTY
5% FAILURE RATE

60.000 h
LED LIFETIME L90B10

100.000 h
LED LIFETIME L70B50

Relamping	Lumen LED*	Watt LED**	Lumen Out***	Watt	Lumen Watt Out	Configurazione LED LED configuration	Codice Code	K*	Alimentazione Power Supply	Schermo Diffuser
[L] Lunghezza/Lenght - 1585 mm 										
1x58	4000	24	2945	26	> 113	_____	IZTP3(..*)3P	W: 3.000 N: 4.000 C: 6.000	- : CAE	opale <i>opal</i>
2x58	8400	48	6190	52	> 119	_____	IZTP6(..*)3P			
[L] Lunghezza/Lenght - 1210 mm 										
1x36	3000	18	2210	19,5	> 113	_____	IZTP2(..*)3P	W: 3.000 N: 4.000 C: 6.000	- : CAE	opale <i>opal</i>
2x36	6000	37	4640	40	> 116	_____	IZTP5(..*)3P			
UT 2x30	6400	38	4800	41	> 117	_____	IZUTP2(..*)3P			
UT 2x58	8550	47	6190	52	> 119	_____	IZUTP5(..*)3P			
[L] Lunghezza/Lenght - 645 mm 										
1x18	1350	7,5	995	9	> 108	_____	IZTP1(..*)3P	W: 3.000 N: 4.000 C: 6.000	- : CAE	opale <i>opal</i>
2x18	2780	17	2050	18,5	> 111	_____	IZTP4(..*)3P			



ZITA 3P 1500-1200-600

Testata fissa completa di presa e spina 3 poli ad innesto rapido per il collegamento elettrico rapido.
Fixed endcap with 3 poles connection plug and socket for a quick electrical connection.

Temperatura ambiente min e max | *Min and max room temperature:*
(-20° +40°)

* Lumen nominali LED max a 25° | *Nominal lumen at max 25°*

** Potenza dei LED | *LED power*

*** Flusso totale in uscita dall'apparecchio a temperatura di lavoro (Ta 25° - 4.000 K).
Total lighting fitting flux output at working temperature (Ta 25° - 4.000 K).
(3.000 K -8% - CRI 90 -10%).

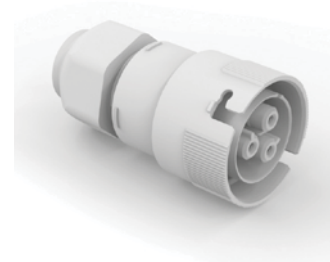
>90
CRI

NON DISPONIBILE | NOT AVAILABLE



Tolleranza dei valori indicati: +/- 10%. | *Tolerance of the indicated value: +/- 10%*
Con Ra > 90 riduzione del flusso luminoso pari al 10%. | *With CRI > 90 reduction of luminous flux is equal to 10%.*
IDEALLUX s.r.l. si riserva il diritto di apportare modifiche migliorative sul prodotto in qualsiasi momento. |
IDEALLUX s.r.l. reserves the right to make improvements to the product at any time.

ZITA 3P PROLUNGABILE (codice IZTP..3P) cablaggio passante 3 poli, completa di presa maschio e femmina per fila continua. | *With passing power line 3 poles, plug and socket for continuous line included (code IZTP..3P)*

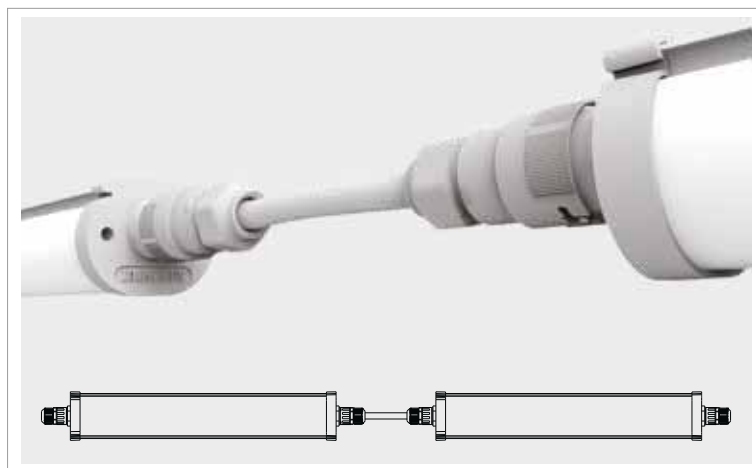
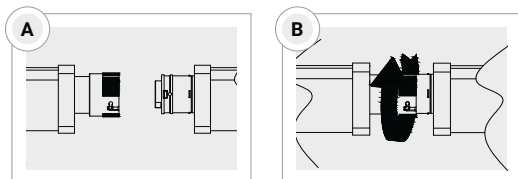


PRESA FEMMINA






Per alimentazione da cablare
Da ordinare (codice 7PR3702-V)
Lunghezza 54mm.

FEMALE SOCKET

Female socket to be wired
To be ordered separately (code 7PR3702-V)
Length 54 mm.



Prolunga lunghezza 300-600-800-1000 mm 3 POLI, completa di presa femmina e spina maschio.
Extension cord 300-600-800-1000mm with 3 POLES, plug and socket.

	DESCRIZIONE ACCESSORIO ACCESSORY DESCRIPTION	CODICE CODE
	<p>STAFFE DI FISSAGGIO ANTIVANDOLO <i>FIXING SPRINGS VANDAL PROOF</i></p>	IN-MOL-AV
	<p>ATTACCO CLEAN Per uso alimentare <i>CLEAN CONNECTION</i> <i>For feed use</i></p>	IN600 IN1200 IN1500
	<p>PROLUNGA LUNGHEZZA 300/600/800/1000 mm <i>EXTENSION FOR LINE APPLICATIONS</i> <i>300/600/800/1000 mm</i></p>	INHP/P/300 INHP/P/600 INHP/P/800 INHP/P/1000
	<p>PROLUNGA LUNGHEZZA 300/600/800/1000 mm <i>EXTENSION FOR LINE APPLICATIONS</i> <i>300/600/800/1000 mm</i></p>	INHP5/P/300 INHP5/P/600 INHP5/P/800 INHP5/P/1000
	<p>PRESA FEMMINA Per alimentazione da cablare (da ordinare per INNOVA/P). Lunghezza 54mm. <i>FEMALE SOCKET</i> <i>Female socket to be wired (to be ordered for INNOVA/P)</i> <i>Length 54 mm.</i></p>	7PR3702-V (3 poli)
	<p>SPINA MASCHIO Per alimentazione da cablare <i>MALE PLUG</i> <i>Male plug to be wired</i></p>	7PR3701 (3 poli)
	<p>TERMINALE Chiusura file <i>END CAP</i></p>	IN-KIT-TAP
	<p>INNESTO TUBO Ø 20mm <i>JOINT FOR RIGIDE CONDUIT</i> <i>Ø 20mm</i></p>	7PR3700-C