

# Kit RETROFIT



				<b>&gt;80</b> CRI	<b>W</b> 3000 K	<b>N</b> 4000 K	<b>IP66</b> EN 60529	<b>230 V</b> 2014/35/UE	<b>50/60</b> Hz	<b>IK 06</b> EN 60068	<b>850°</b> EN 60695	
<b>RG 0</b> EN 62471	<b>6</b> Kv				<b>08</b> BLACK METALLIZED	<b>5Y WARRANTY</b> 5% FAILURE RATE	<b>100.000 h</b> LED LIFETIME L90B10	<b>ES</b> ON/OFF	<b>FP</b> PROGRAM	<b>On request</b>		

## EN

Universal optic group for energy efficiency of existing street furniture. Steel sheet support painted with epoxy powders after phosphating. Extruded anodized aluminum body with heat-sink function. Molded PMMA street optics with high optical efficiency. LED light source. Direct light emission.

## IT

Gruppo ottico universale per l'efficientamento energetico di lampioni ornamentali esistenti. Supporto in lamiera d'acciaio verniciato con polveri epossidiche previa fosfarazione. Corpo in alluminio estruso anodizzato con funzione di dissipatore. Ottiche stradali in PMMA stampato ad alto rendimento ottico. Sorgente luminosa LED. Emissione diretta.

## FR

Unité optique universelle pour l'efficacité énergétique des lampadaires ornementaux existants. Support en tôle d'acier, peinture à base de poudre époxyde et traitement de surface No-Rinse. Corps en aluminium extrudé et anodisé avec fonction de dissipateur. Optiques routières en PMMA à haute résistance aux températures et haut rendement optique. Source lumineuse LED. Emission directe.

## ES

Grupo óptico universal para el efficientamento energético del alumbrado público existente. Soporte de chapa de acero barnizada con polvo epoxi previamente fosfatado. Cuerpo en aluminio extruido anodizado con función de disipador. Óptica vial en metacrilato (PMMA) estampado de alta eficiencia óptica. Fuente de luz LED. Emisión directa

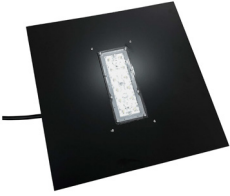
## DE

Universale optische Gruppe für die Energieeffizienz bestehender dekorativer StraSSenlaternen. Träger aus Stahlblech, das nach der Phosphatierung mit Epoxidpulvern beschichtet wurde. Körper aus eloxiertem extrudiertem Aluminium mit Kühlkörperfunktion. Straßenoptik aus gegossenem PMMA mit hoher optischer Effizienz. LED-Lichtquelle. Direkte Lichtemission.

## RU

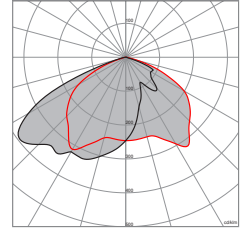
Универсальный оптический блок для энергоэффективности существующих декоративных уличных фонарей. Опора из стального листа, окрашенного эпоксидными красками-порошками после фосфатирования. Анодированный экструдированный алюминиевый корпус с функцией радиатора. Дорожная оптика из литого ПММА с высокой оптической эффективностью. Светодиодный источник света. Прямой поток света.

## KIT RETROFIT AS1



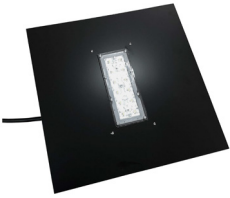
Code	Lm LED	Lm Out	Watt Out	Lm Watt Out	Relamping
<b>KRT0803W/NAS1ES/FP08</b>	2435	2240	15	> 150	SAP50
<b>KRT0804W/NAS1ES/FP08</b>	3575	3290	23	> 143	SAP70
<b>KRT0806W/NAS1ES/FP08</b>	5025	4620	35	> 133	JM70
<b>KRT1203W/NAS1ES/FP08</b>	4230	3890	26	> 147	MBF125
<b>KRT1206W/NAS1ES/FP08</b>	7535	6935	52	> 133	MBF150
<b>KRT1207W/NAS1ES/FP08</b>	8060	7415	57	> 131	JM150

W/N= **W** (3000 K) | **N** (4000 K) ES/FP= **ES** ON/OFF | **FP** DALI



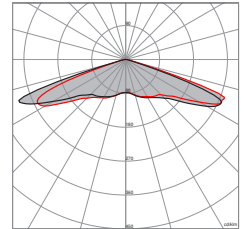
Lm Led/Lm Out:  
Standard - **N** (4000 K)  
-8% - **W** (3000 K)

## KIT RETROFIT RS2



Code	Lm LED	Lm Out	Watt Out	Lm Watt Out	Relamping
<b>KRT0803W/NRS2ES/FP08</b>	2435	2240	15	> 150	SAP50
<b>KRT0804W/NRS2ES/FP08</b>	3575	3290	23	> 143	SAP70
<b>KRT0806W/NRS2ES/FP08</b>	5025	4620	35	> 133	JM70
<b>KRT1203W/NRS2ES/FP08</b>	4230	3890	26	> 147	MBF125
<b>KRT1206W/NRS2ES/FP08</b>	7535	6935	52	> 133	MBF150
<b>KRT1207W/NRS2ES/FP08</b>	8060	7415	57	> 131	JM150

W/N= **W** (3000 K) | **N** (4000 K) ES/FP= **ES** ON/OFF | **FP** DALI

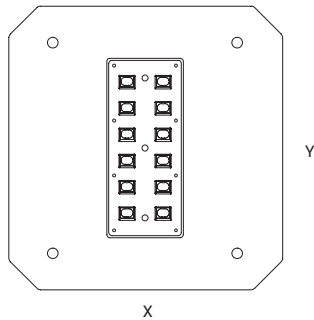


Lm Led/Lm Out:  
Standard - **N** (4000 K)  
-8% - **W** (3000 K)

## Mechanical Features

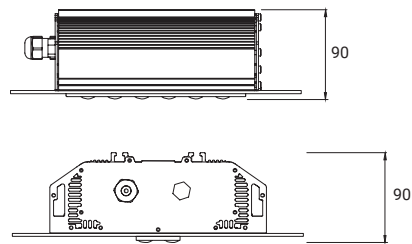
### KIT RETROFIT

#### DIMENSIONAL



#### X - Y (info):

Customizable shape, size and performance  
Sagoma, dimensioni e prestazioni personalizzabili  
Forme, taille et performance personalisables  
Forma, dimensiones y presanciones personalizadas  
Anpassbare Form, Größe und Leistung  
Настраиваемая форма, размер и производительность



WEIGHT (Kg)

**4,0**

MINIMUM AND MAXIMUM ENVIRONMENT TEMPERATURE (Ta)

**-20 ~ +45°C**