



			>70 CRI	>80 CRI	AW AMBER (K)	W 3000 K	N 4000 K	IP65 EN 60529	230 V 2014/35/UE	50/60 Hz	IK 09 EN 60068	850° EN 60695
	RG 0 EN 62471	6 Kv					CAE ON/OFF	08 BLACK METALLIZED	5Y WARRANTY 5% FAILURE RATE	60.000 h LED LIFETIME L90B10		

EN

Die-cast aluminum body painted with epoxy powders after phosphating. Shape and dimensions designed to obtain a reduced wind exposure surface. Transparent tempered glass cover resistant to thermal shocks. Molded PMMA optics with high optical efficiency. Bent steel adjustable bracket painted with epoxy powders after phosphating complete with goniometer. IP66 quick plug-in connector for power line included. LED light source. Direct light emission.

IT

Corpo in alluminio pressofuso verniciato con polveri epossidiche previa fosfatazione. Sagoma e dimensioni progettate per ottenere una superficie d'esposizione al vento ridotta. Schermo di protezione in vetro temperato trasparente resistente agli shock termici. Ottiche in PMMA stampato ad alto rendimento ottico. Staffa regolabile in acciaio pressopiegato verniciata con polveri epossidiche previa fosfatazione, completa di goniometro. Connettore rapido IP66 per linea di alimentazione incluso. Sorgente luminosa LED. Emissione diretta.

FR

Corps en aluminium moulé sous pression, peinture à base de poudre époxyde garantie anticorrosion, traitement de surface No-Rinse. Forme et dimensions optimisées pour diminuer la surface d'exposition au vent. Ecran de protection en verre trempé résistant aux chocs thermiques. Optiques en PMMA à haute résistance aux températures et haut rendement optique. Support de fixation réglable, pliée à la presse, en acier traité avec peinture epoxy pulvérisé par phosphatation. Connecteur rapide IP66 pour ligne électrique incluse. Source lumineuse LED. Emission directe.

ES

Carcasa de aluminio fundido a presión y barnizado con polvos epoxidicos previa fosfatación. Forma y dimensión diseñados para conseguir una superficie reducida de resistencia al viento. Vidrio templado transparente antichoque térmico. Óptica en metacrílico (PMMA) estampado de alta eficiencia óptica. Soporte regulable de acero plegado a presión barnizado con polvo epoxi previamente fosfatado, completo de goniómetro. Conector rápido IP66 para alimentación incluido. Fuente de luz LED. Emisión directa.

DE

Körper aus Aluminium-Druckguss, das nach der Phosphatierung mit Epoxidpulver lackiert wurde. Entworfen Form und Abmessungen für eine reduzierte Windfläche. Schutzscheibe aus transparentem Hartglas, beständig gegen Thermoschocks. Optik aus gegossenem PMMA mit hoher optischer Effizienz. Verstellbare Halterung aus gepresstem Stahl, der nach der Phosphatierung mit Epoxidpulver lackiert wurde, komplett mit Goniometer. Direkte Ausgabe. IP66-Schnellverbinder für Stromleitung enthalten. LED-Lichtquelle. Direkte Lichtemission.

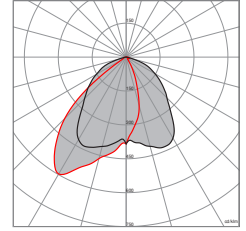
RU

Корпус из фосфатированного литого алюминия окрашенного эпоксидными порошковыми красками. Форма и размеры спроектированы для получения уменьшенной ветровой нагрузки на поверхность. Защитный экран из прозрачного закаленного стекла, устойчивого к термошоку. Оптика из ПММА с высокой оптической эффективностью. Регулируемая кронштейн из гнутой фосфатированной стали, окрашенные эпоксидными красками-порошками, в комплекте с транспортиром. Быстроразъемное соединение IP66 для линии электроподключения включено в комплект Светодиодный источник света. Прямой поток света.

GURU TECNO AS



Code	Lm LED	Lm Out	Watt Out	Lm Watt Out	Relamping
KGT732410ASN08	10250	8890	79	> 112	JM150
KGT732410ASW08	9750	8460	79	> 107	JM150
KGT832410ASN08	9160	7950	80,5	> 99	MBF250
KGT832410ASW08	8730	7575	80,5	> 94	MBF250
KGT32410ASAW08	7365	6390	80	> 80	SAP100
KGT732405ASN08	5540	4805	37	> 130	JM70
KGT732405ASW08	5240	4545	37	> 123	JM70
KGT832405ASN08	5013	4350	37	> 118	MBF125
KGT832405ASW08	4794	4160	37	> 112	MBF125
KGT32405ASAW08	3735	3240	37	> 87	SAP70



Lm Led/Lm Out:
Standard - **N** (4000 K)
-8% - **W** (3000 K)

W (3000 K) | **N** (4000 K) | **AW** (AMBER)

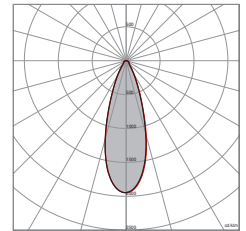
CRI >70= **KGT732405** - **KGT732410**

CRI >80= **KGT832405** - **KGT832410**

GURU TECNO C



Code	Lm LED	Lm Out	Watt Out	Lm Watt Out	Relamping
KGT732410CN08	10250	8952	79	> 113	JM150
KGT732410CW08	9750	8105	79	> 102	JM150
KGT832410CN08	9160	7615	80,5	> 94	MBF250
KGT832410CW08	8730	7260	80,5	> 90	MBF250
KGT32410CAW08	7365	6125	80	> 76	SAP100
KGT732405CN08	5540	4605	37	> 124	JM70
KGT732405CW08	5240	4355	37	> 118	JM70
KGT832405CN08	5013	4170	37	> 113	MBF125
KGT832405CW08	4794	3985	37	> 108	MBF125
KGT32405CAW08	3735	3105	37	> 84	SAP70



Lm Led/Lm Out:
Standard - **N** (4000 K)
-8% - **W** (3000 K)

W (3000 K) | **N** (4000 K) | **AW** (AMBER)

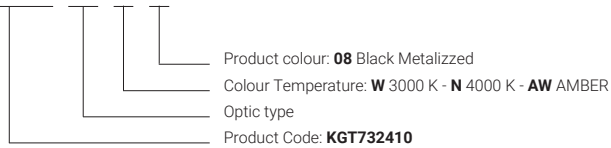
CRI >70= **KGT732405** - **KGT732410**

CRI >80= **KGT832405** - **KGT832410**



Code

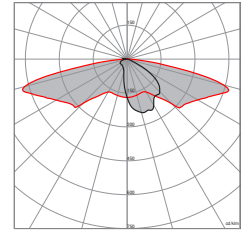
Code Ordering example: **KGT732410 AS N 08**



GURU TECNO CP



Code	Lm LED	Lm Out	Watt Out	Lm Watt Out	Relamping
KGT732410CPN08	10250	8750	79	> 111	JM150
KGT732410CPW08	9750	8325	79	> 105	JM150
KGT832410CPN08	9160	7820	80,5	> 97	MBF250
KGT832410CPW08	8730	7455	80,5	> 93	MBF250
KGT32410CPAW08	7365	6290	80	> 79	SAP100
KGT732405CPN08	5540	4730	37	> 128	JM70
KGT732405CPW08	5240	4470	37	> 121	JM70
KGT832405CPN08	5013	4280	37	> 116	MBF125
KGT832405CPW08	4794	4095	37	> 111	MBF125
KGT32405CPAW08	3735	3190	37	> 86	SAP70



Lm Led/Lm Out:
Standard - **N** (4000 K)
-8% - **W** (3000 K)

W (3000 K) | **N** (4000 K) | **AW** (AMBER)

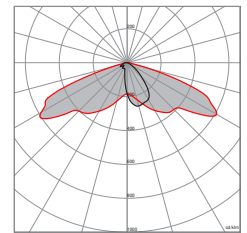
CRI >70= **KGT732405** - **KGT732410**

CRI >80= **KGT832405** - **KGT832410**

GURU TECNO ST



Code	Lm LED	Lm Out	Watt Out	Lm Watt Out	Relamping
KGT732410STN08	10250	8050	79	> 102	JM150
KGT732410STW08	9750	7660	79	> 97	JM150
KGT832410STN08	9160	7195	80,5	> 89	MBF250
KGT832410STW08	8730	6860	80,5	> 85	MBF250
KGT32410STAW08	7365	5785	80	> 72	SAP100
KGT732405STN08	5540	4355	37	> 118	JM70
KGT732405STW08	5240	4115	37	> 111	JM70
KGT832405STN08	5013	3940	37	> 106	MBF125
KGT832405STW08	4794	3765	37	> 102	MBF125
KGT32405STAW08	3735	2935	37	> 79	SAP70



Lm Led/Lm Out:
Standard - **N** (4000 K)
-8% - **W** (3000 K)

W (3000 K) | **N** (4000 K) | **AW** (AMBER)

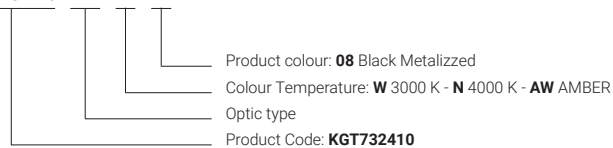
CRI >70= **KGT732405** - **KGT732410**

CRI >80= **KGT832405** - **KGT832410**



Code

Code Ordering example: **KGT732410 CP N 08**

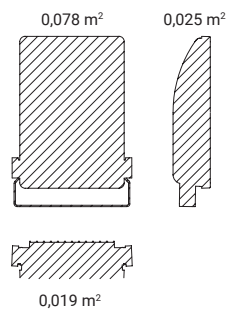


GURU TECNO

DIMENSIONAL + FIXTING



WIND RESISTANCE

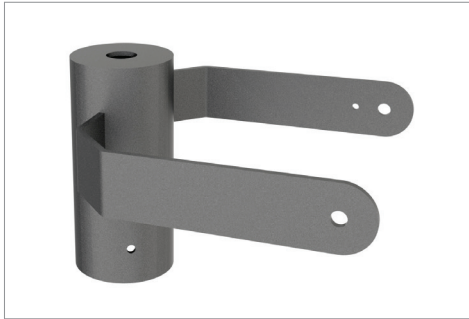


WEIGHT (Kg)

5,0

MINIMUM AND MAXIMUM ENVIRONMENT TEMPERATURE (Ta)

-20 ~ +45°C



KT6010

Bracket for top installation 0°-90° (post Ø 60)
 Staffa per installazione cima palo 0°-90° (palo Ø 60)
 Support pour installation en tête de mât (mât Ø 60)
 Soporte para instalación con columna (columna Ø 60)
 Halterung für Mastkopfmontage (Mast Ø 60)
 Кронштейн для монтажа на столбе под углом 0° -90°
 (Ø столба 60)



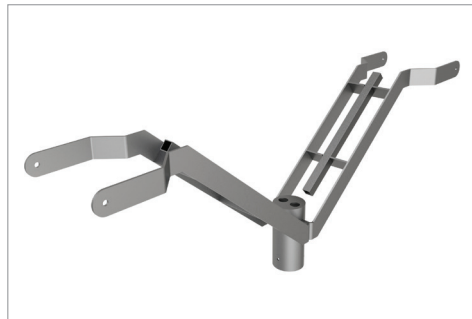
KT6020

Double bracket for top installation 0°-90° (post Ø 60)
 Staffa per installazione cima palo doppia 0°-90° (palo Ø 60)
 Support double pour installation en tête de mat (mat Ø 60)
 Soporte doble para instalación a columna (columna Ø 60)
 Doppelhalterung für Mastkopfmontage (Mast Ø 60)
 Двойной кронштейн для монтажа на столбе под углом
 0° -90° (Ø столба 60)



KT6110

Single outreach (post Ø 60)
 Sbraccio singolo (palo Ø 60)
 Support simple (mat Ø 60)
 Divulgación sola (columna Ø 60)
 Single Outreach (Mast Ø 60)
 Единый охват (Ø столба 60)



KT6120

Double outreach (post Ø 60)
 Sbraccio doppio (palo Ø 60)
 Double support (mat Ø 60)
 Divulgación doble (columna Ø 60)
 Double Outreach (Mast Ø 60)
 Двойной охват (Ø столба 60)



KATRD

Adaptor for post top installation (post Ø 60)
 Adattore per installazione cima palo (palo Ø 60)
 Adaptateur pour installation en tête de mat (mat Ø 60)
 Adaptator para instalación a columna (columna Ø 60)
 Adapter für Mastaufstellung (Mast Ø 60)
 Адаптер для установки на верхушку столба (Ø столба 60)