

On request

EN

Die-cast aluminum body painted with epoxy powders after phosphating. Shape and dimensions designed to obtain a reduced wind exposure surface. Transparent tempered glass cover resistant to thermal shocks. Molded PMMA street optics with high optical efficiency. Complete with outgoing cable L40 (cm), connector not included. Adjustable pole fixing system 0°-90° (pole head diameter 60 mm) adjustable from 0° to 20° for pole top installations. LED light source. Direct light emission. Integrated device for active control of the LED temperature through NTC.

ES

Carcasa de aluminio fundido a presión y barnizado con polvos epoxidicos previa fosfatación. Forma y dimensión diseñados para conseguir una superficie reducida de resistencia al viento. Vidrio templado transparente antichoque térmico. Óptica vial en metracrilato (PMMA) estampado de alta eficiencia óptica. Con cable de salida L=40 (cm). Conector no incluido. Sistema de fijación de poste ajustable 0°-90° (60 mm de diámetro cabeza del poste) inclinable de 0° a 20° para instalación a columna. Fuente de luz LED. Emisión directa. Dispositivo integrado para el control activo de la temperatura de LED através de NTC.

IT

Corpo in alluminio pressofuso verniciato con polveri epossidiche previa fosfatazione. Sagoma e dimensioni progettate per ottenere una superficie d'esposizione al vento ridotta. Schermo di protezione in vetro temperato trasparente resistente agli shock termici. Ottiche stradali in PMMA stampato ad alto rendimento ottico. Fornito completo di cavo uscente L40 (cm), connettore non incluso. Sistema di fissaggio a palo regolabile 0°-90° (testa palo diametro 60 mm) orientabile da 0° a 20° per installazioni cima palo. Sorgente luminosa LED. Emissione diretta. Dispositivo integrato per il controllo attivo della temperatura dei LED tramite NTC.

DE

Körper aus Aluminium-Druckguss, das nach der Phosphatierung mit Epoxidpulver lackiert wurde. Entworfen Form und Abmessungen für eine reduzierte Windfläche. Schutzscheibe aus transparentem Hartglas, beständig gegen Thermoschocks. Straßenoptik aus gegossenem PMMA mit hoher optischer Effizienz. Komplett mit abgehendem Kabel L40 (cm), nicht enthalten. Einstellbares Polbefestigungssystem 0°-90° (Polkopfdurchmesser 60 mm), einstellbar von 0° bis 20° für Polkopfinstallationen. LED-Lichtquelle. Direkte Lichtemission. Integriertes Gerät zur aktiven Regelung der LED-Temperatur über NTC.

FR

Corps en aluminium moulé sous pression, peinture à base de poudre époxyde garantie anticorrosion, traitement de surface No-Rinse. Forme et dimensions optimisées pour diminuer la surface d'exposition au vent. Ecran de protection en verre trempé résistant aux chocs thermiques. Optiques routières en PMMA à haute résistance aux températures et haut rendement optique. Fourni avec câble en sortie pour branchement L=40 (cm), connecteur no inclus. Raccord mât orientable de 0° à 90° pour fixation sur la crose, et de 0° à 20° pour fixation en sommet de mât. (mâts : 60 mm de diamètre). Source lumineuse LED. Emission directe. Système intégré NTC pour contrôle automatique de la température.

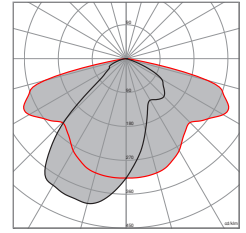
RU

Корпус из фосфатированного литого алюминия окрашенного эпоксидными порошковыми красками. Форма и размеры спроектированы для получения уменьшенной ветровой нагрузки на поверхность. Защитный экран из прозрачного закаленного стекла, устойчивого к термшоку. Дорожная оптика из литого ПММА с высокой оптической эффективностью. Поставляется в комплекте с входящим кабелем длиной 40 см. разъем не входит. Система для крепления на столбе с регулируемым углом наклона 0° - 90° (диаметр головки столба 60 мм), для монтажа от 0° до 20°. Светодиодный источник света. Прямой поток света. Интегрированное устройство для контроля температуры светодиодов через NTC.

ELLP M ST1



Code	Lm LED	Lm Out	Watt Out	Lm Watt Out	Relamping
ELPM5W/NST1ES/FP09	5347	4566	32	> 143	MBF125
ELPM6W/NST1ES/FP09	7770	6636	49,5	> 134	MBF250
ELPM7W/NST1ES/FP09	9882	8439	66,5	> 127	JM150
ELPM8W/NST1ES/FP09	13245	11311	97,5	> 116	JM250
ELPM13W/NST1ES/FP09	8659	7395	56,5	> 131	MBF250
ELPM14W/NST1ES/FP09	11619	9923	81,5	> 122	SAP150
ELPM9W/NST1ES/FP09	8020	6849	48	> 143	JM150
ELPM10W/NST1ES/FP09	11655	9953	74	> 135	SAP150
ELPM11W/NST1ES/FP09	14820	12656	99,5	> 127	MBF400
ELPM15W/NST1ES/FP09	8958	7650	54,5	> 140	MBF250
ELPM16W/NST1ES/FP09	10477	8947	65,5	> 137	SAP150
ELPM17W/NST1ES/FP09	17091	14596	119,5	> 122	SAP250



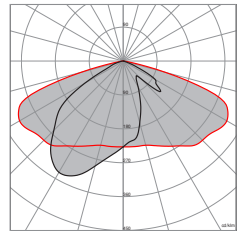
Lm Led/Lm Out:
Standard - **N** (4000 K)
-8% - **W** (3000 K)

W/N= **W** (3000 K) | **N** (4000 K) ES/FP= **ES** ON/OFF | **FP** DALI

ELLP M ST2



Code	Lm LED	Lm Out	Watt Out	Lm Watt Out	Relamping
ELPM5W/NST2ES/FP09	5347	4807	32	> 150	MBF125
ELPM6W/NST2ES/FP09	7770	6985	49,5	> 141	MBF250
ELPM7W/NST2ES/FP09	9882	8884	66,5	> 134	JM150
ELPM8W/NST2ES/FP09	13245	11907	97,5	> 122	JM250
ELPM13W/NST2ES/FP09	8659	7784	56,5	> 138	MBF250
ELPM14W/NST2ES/FP09	11619	10445	81,5	> 128	SAP150
ELPM9W/NST2ES/FP09	8020	7210	48	> 150	JM150
ELPM10W/NST2ES/FP09	11655	10478	74	> 142	SAP150
ELPM11W/NST2ES/FP09	14820	13323	99,5	> 134	MBF400
ELPM15W/NST2ES/FP09	8958	8053	54,5	> 148	MBF250
ELPM16W/NST2ES/FP09	10477	9419	65,5	> 144	SAP150
ELPM17W/NST2ES/FP09	17091	15365	119,5	> 129	SAP250



Lm Led/Lm Out:
Standard - **N** (4000 K)
-8% - **W** (3000 K)

W/N= **W** (3000 K) | **N** (4000 K) ES/FP= **ES** ON/OFF | **FP** DALI

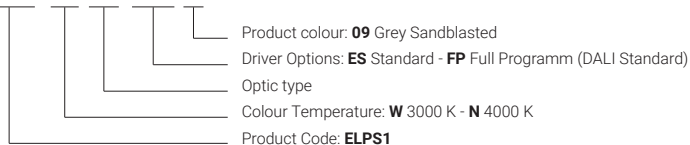
Full Program: functionalities available on request



If not specified in the order, the product (FP) will be supplied in standard DALI version.
For any further information see at page 66-67.

Code

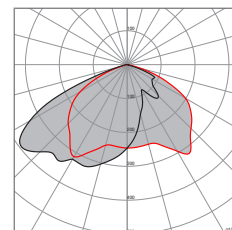
Code Ordering example: **ELPS1 W/N ST2 ES/FP 09**



ELLP M AS1



Code	Lm LED	Lm Out	Watt Out	Lm Watt Out	Relamping
ELPM5W/NAS1ES/FP09	5347	4454	32	> 139	MBF125
ELPM6W/NAS1ES/FP09	7770	6472	49,5	> 131	MBF250
ELPM7W/NAS1ES/FP09	9882	8232	66,5	> 124	JM150
ELPM8W/NAS1ES/FP09	13245	11033	97,5	> 113	JM250
ELPM13W/NAS1ES/FP09	8659	7213	56,5	> 128	MBF250
ELPM14W/NAS1ES/FP09	11619	9679	81,5	> 119	SAP150
ELPM9W/NAS1ES/FP09	8020	6681	48	> 139	JM150
ELPM10W/NAS1ES/FP09	11655	9709	74	> 131	SAP150
ELPM11W/NAS1ES/FP09	14820	12345	99,5	> 124	MBF400
ELPM15W/NAS1ES/FP09	8958	7462	54,5	> 137	MBF250
ELPM16W/NAS1ES/FP09	10477	8727	65,5	> 133	SAP150
ELPM17W/NAS1ES/FP09	17091	14237	119,5	> 119	SAP250



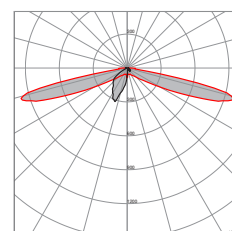
Lm Led/Lm Out:
Standard - **N** (4000 K)
-8% - **W** (3000 K)

W/N= **W** (3000 K) | **N** (4000 K) ES/FP= **ES** ON/OFF | **FP** DALI

ELLP M CP



Code	Lm LED	Lm Out	Watt Out	Lm Watt Out	Relamping
ELPM5W/NCPES/FP09	5347	4775	32	> 149	MBF125
ELPM6W/NCPES/FP09	7770	6939	49,5	> 140	MBF250
ELPM7W/NCPES/FP09	9882	8825	66,5	> 133	JM150
ELPM8W/NCPES/FP09	13245	11828	97,5	> 121	JM250
ELPM13W/NCPES/FP09	8659	7732	56,5	> 137	MBF250
ELPM14W/NCPES/FP09	11619	10376	81,5	> 127	SAP150
ELPM9W/NCPES/FP09	8020	7162	48	> 149	JM150
ELPM10W/NCPES/FP09	11655	10408	74	> 141	SAP150
ELPM11W/NCPES/FP09	14820	13234	99,5	> 133	MBF400
ELPM15W/NCPES/FP09	8958	7999	54,5	> 147	MBF250
ELPM16W/NCPES/FP09	10477	9356	65,5	> 143	SAP150
ELPM17W/NCPES/FP09	17091	15262	119,5	> 128	SAP250



Lm Led/Lm Out:
Standard - **N** (4000 K)
-8% - **W** (3000 K)

W/N= **W** (3000 K) | **N** (4000 K) ES/FP= **ES** ON/OFF | **FP** DALI

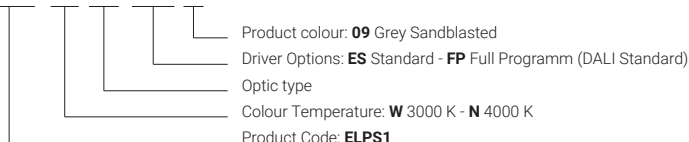
Full Program: functionalities available on request



If not specified in the order, the product (FP) will be supplied in standard DALI version.
For any further information see at page 66-67.

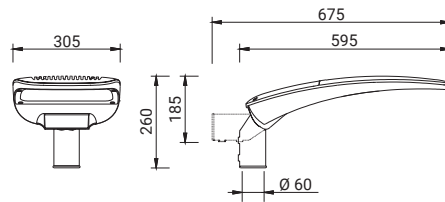
Code

Code Ordering example: **ELPS1** / **W/N** / **AS1** / **ES/FP** / **09**

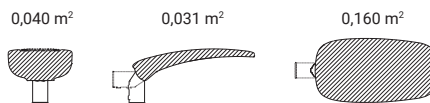


ELLP [M]

DIMENSIONAL



WIND RESISTANCE



WEIGHT (Kg)

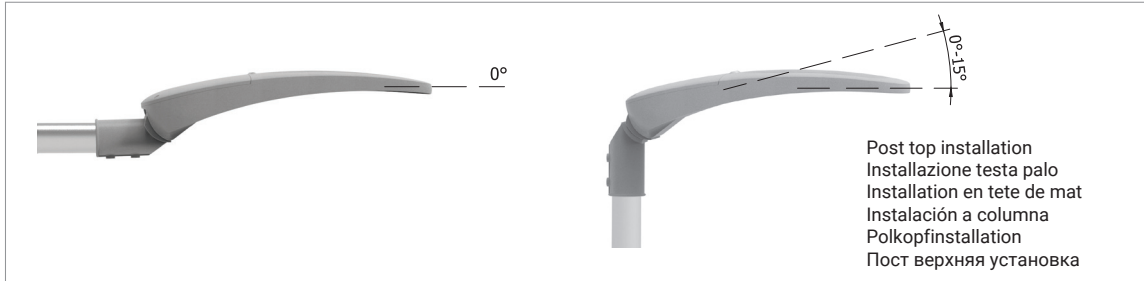
6,4

MINIMUM AND MAXIMUM ENVIRONMENT TEMPERATURE (Ta)

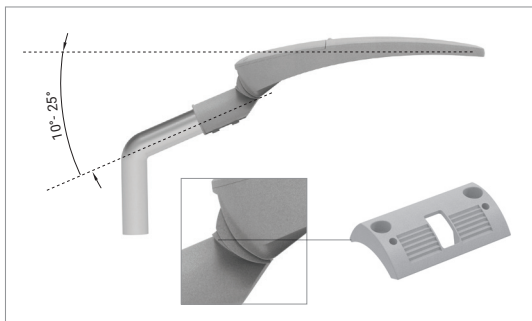
-20 ~ +45°C

ELLP [M]

STANDARD FEATURES | INSTALLAZIONI STANDARD | CARACTÉRISTIQUES STANDARD | CARACTERÍSTICAS ESTÁNDAR
STANDARD EINGESCHAFTEN | СТАНДАРТНЫЕ ФУНКЦИИ

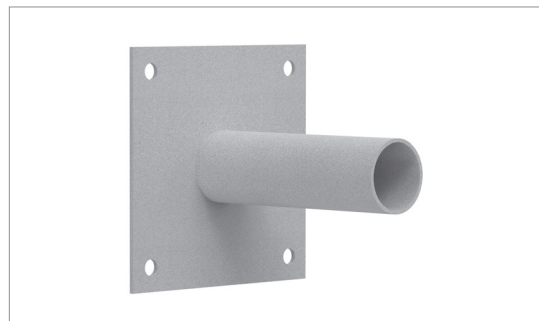


ACCESSOIRES FOR SPECIAL INSTALLATIONS | ACCESSORI PER INSTALLAZIONI SPECIALI | ACCESSOIRES POUR INSTALLATIONS SPÉCIALES
ACCESORIOS PARA INSTALACIONES ESPECIALES | ZUBEHÖRE FÜR SPEZIELLE INSTALLATIONEN
ДЕТАЛИ ДЛЯ СПЕЦИАЛЬНЫХ УСТАНОВОК



KT6001

Adaptor for tilting (10° - 25°)
Adattatore per inclinazione (10° - 25°)
Adaptateur pour inclination (10° - 25°)
Adaptador para inclinación (10° - 25°)
Adapter für Neigung (10° - 25°)
Адаптер для наклона (10° - 25°)



KT6002

Support for wall mounting
Supporto staffaggio a parete
Support pour installation murale
Soporte fijación a pared
Wandhalterung
Настенный кронштейн



KT6003

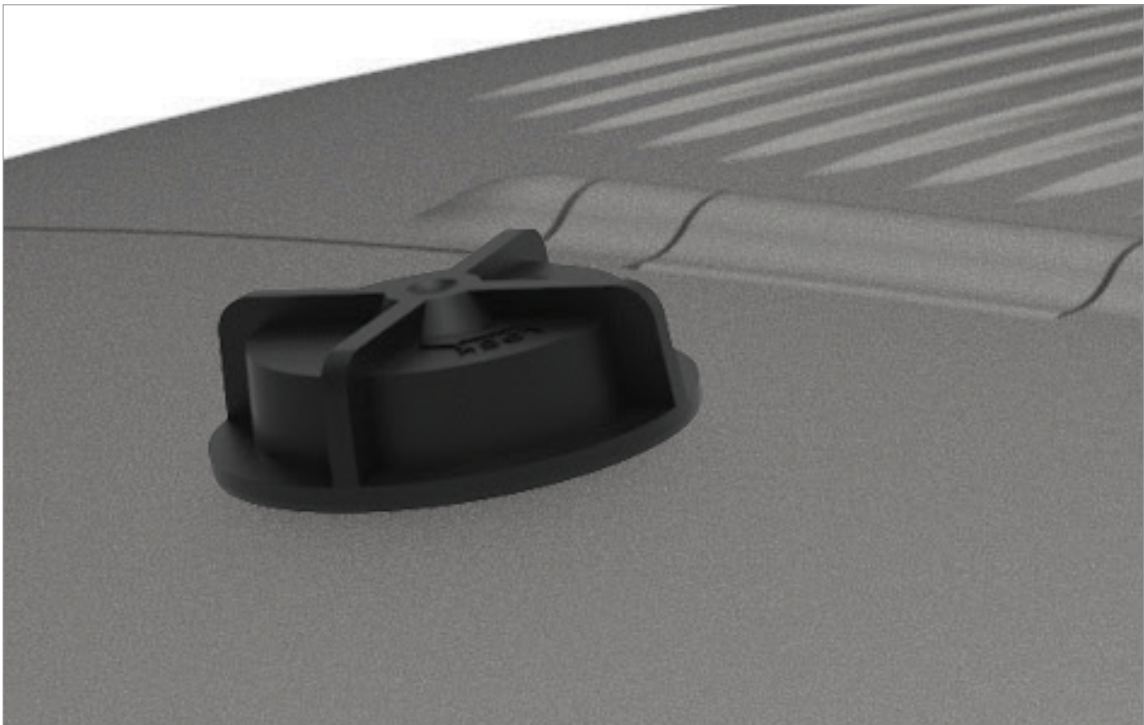
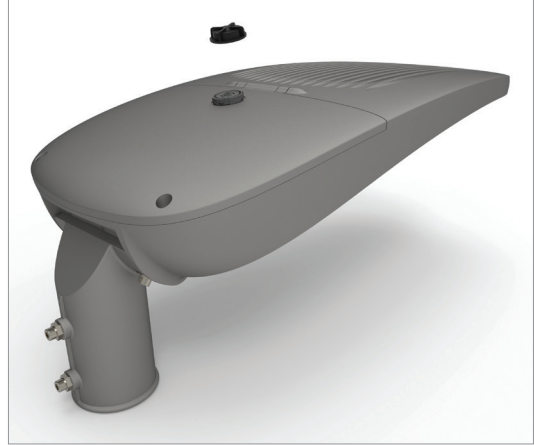
Adaptor for pole (Ø 76 mm)
Adattatore per palo (Ø 76 mm)
Adaptateur pour mat (Ø 76 mm)
Adaptador de columna (Ø 76 mm)
Poladapter (Ø 76 mm)
Крепление для столба (Ø 76 mm)



KT6005

2 poles quick plug-in kit for electrical connection
Kit connettori rapidi 2 poli per connessione elettrica
Kit de connexion rapide à 2 pôles pour le raccordement électrique
Kit de enchufes rápidos de 2 polos para conexión eléctrica
2-poliger Schnellsteckersatz für elektrischen Anschluss
2-полюсный комплект быстрых штекеров для электрического подключения

ELLP [M]



KELPZS - Zagher socket
KELPNS - Nema socket



Only for full program - Solo per Full Programm - Seulement pour Full Programm - Solo para Full Programm - Nur für Full Programm -
Только для полной программы.

